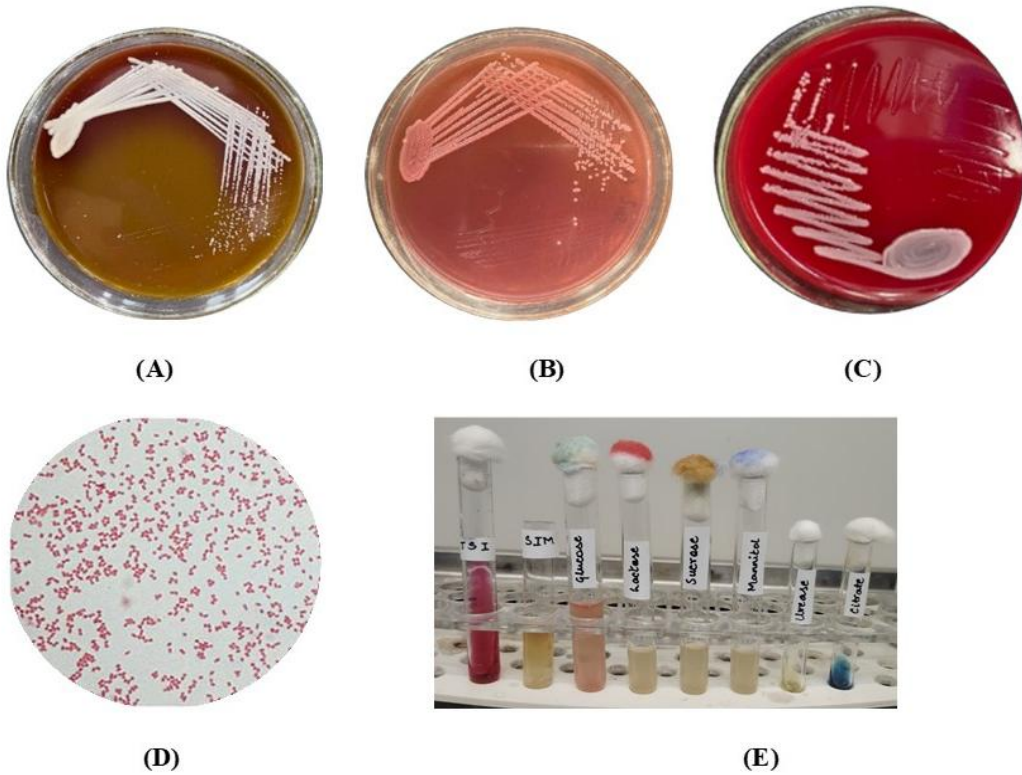


Supplementary Information



Supplementary Figure 1. Representative images of *Acinetobacter baumannii* isolated from grapes: (A) colonies on Leeds Acinetobacter agar, (B) colonies on MacConkey agar, (C) colonies on blood agar, (D) Gram-stained smear showing Gram-negative coccobacilli, and (E) biochemical test confirmation.