

SUPPLEMENTARY INFORMATION

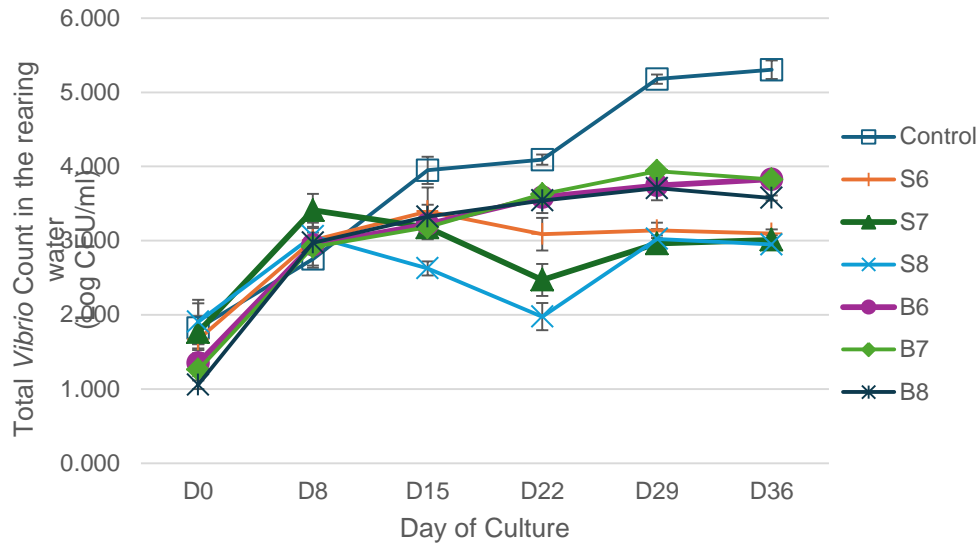


Figure S1: Total *Vibrio* count in the rearing water after 36 days of feeding different densities of *Bacillus* spp. and *Streptomyces* spp.

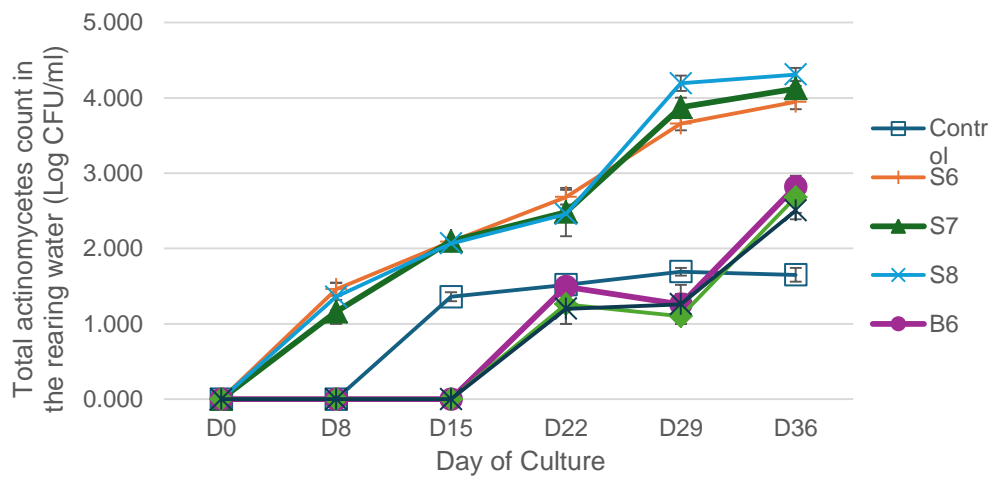


Figure S2: Total actinomycetes count in the rearing water after 36 days of feeding different densities of *Bacillus* spp. and *Streptomyces* spp.

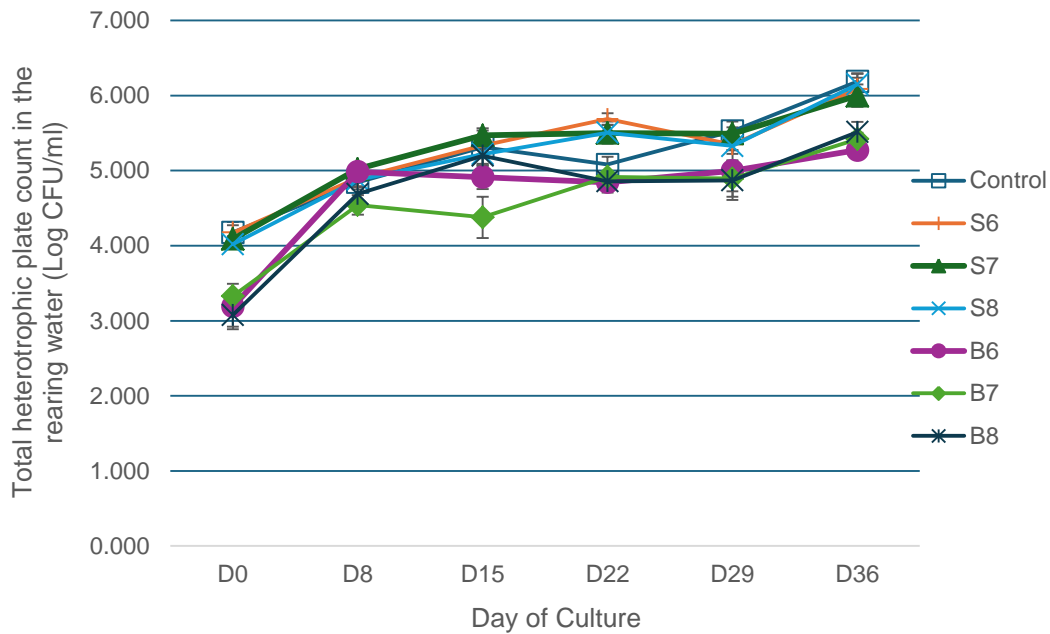


Figure S3: Total heterotrophic plate count in the rearing water after 36 days of feeding different densities of *Bacillus* spp. and *Streptomyces* spp.

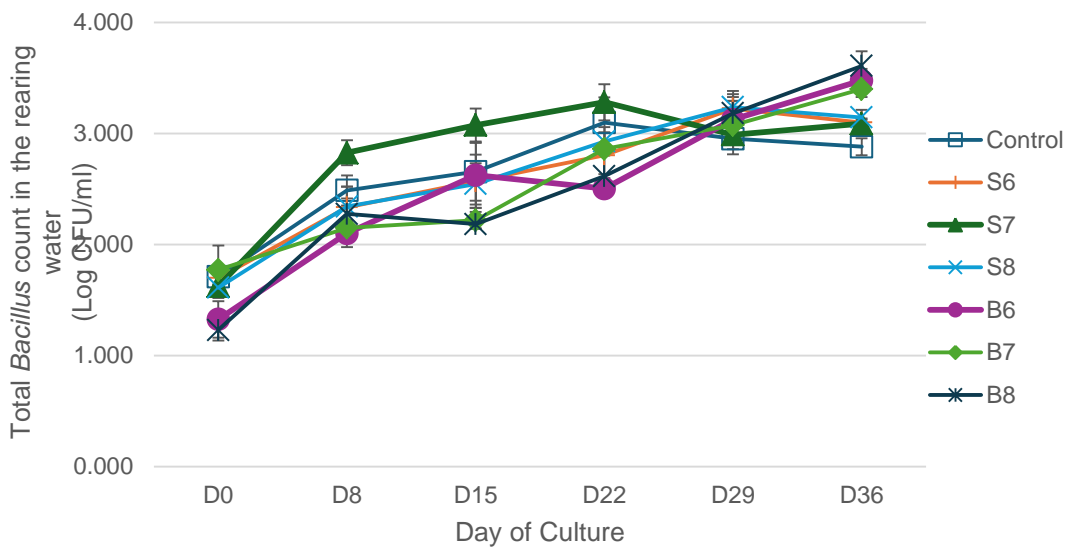


Figure S4: Total *Bacillus* count in the rearing water after 36 days of feeding different densities of *Bacillus* spp. and *Streptomyces* spp.

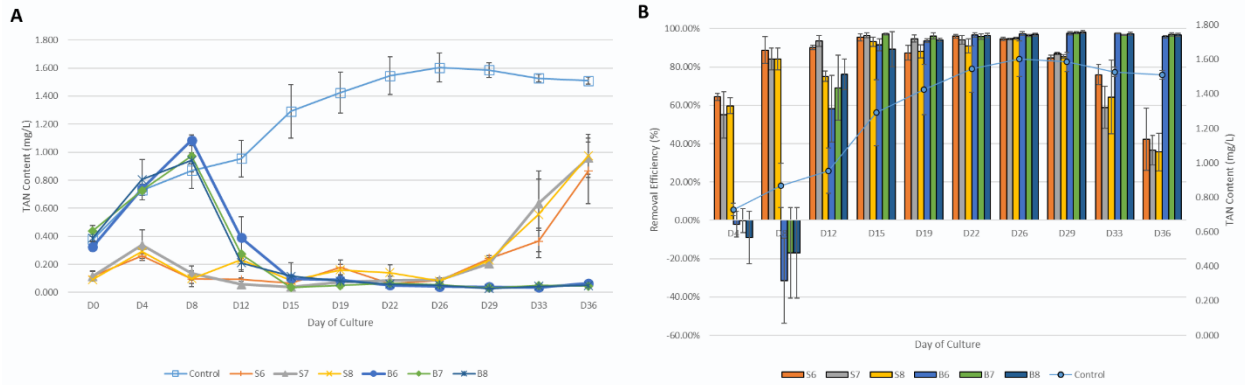


Figure S5: (A) Total ammonia nitrogen (TAN) content in the rearing water; (B) TAN removal efficiency over 36 days, using the Control TAN trend as the baseline for calculating removal efficiency in probiotic treatments (*Bacillus* spp. and *Streptomyces* spp.)

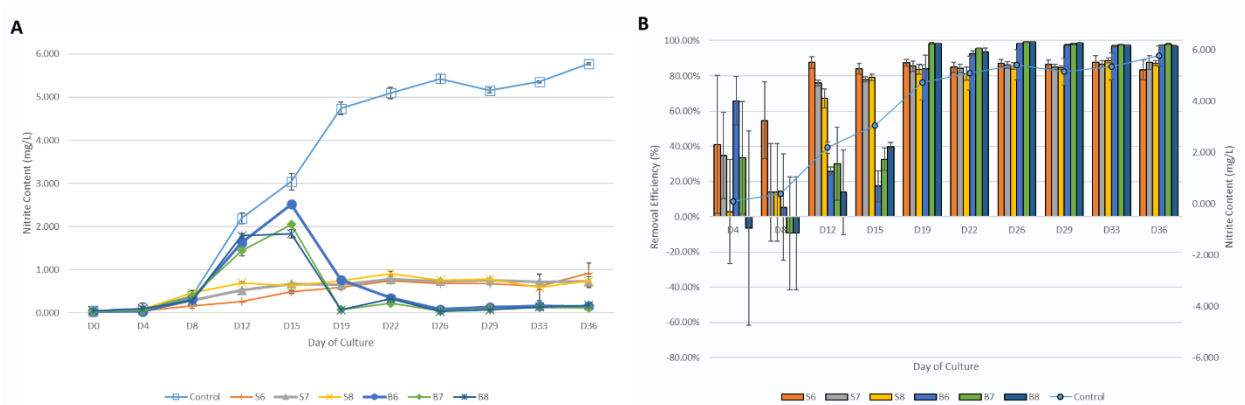


Figure S6: (A) Nitrite content in the rearing water; (B) Nitrite removal efficiency over 36 days, using the Control nitrite trend as the baseline for calculating removal efficiency in probiotic treatments (*Bacillus* spp. and *Streptomyces* spp.)

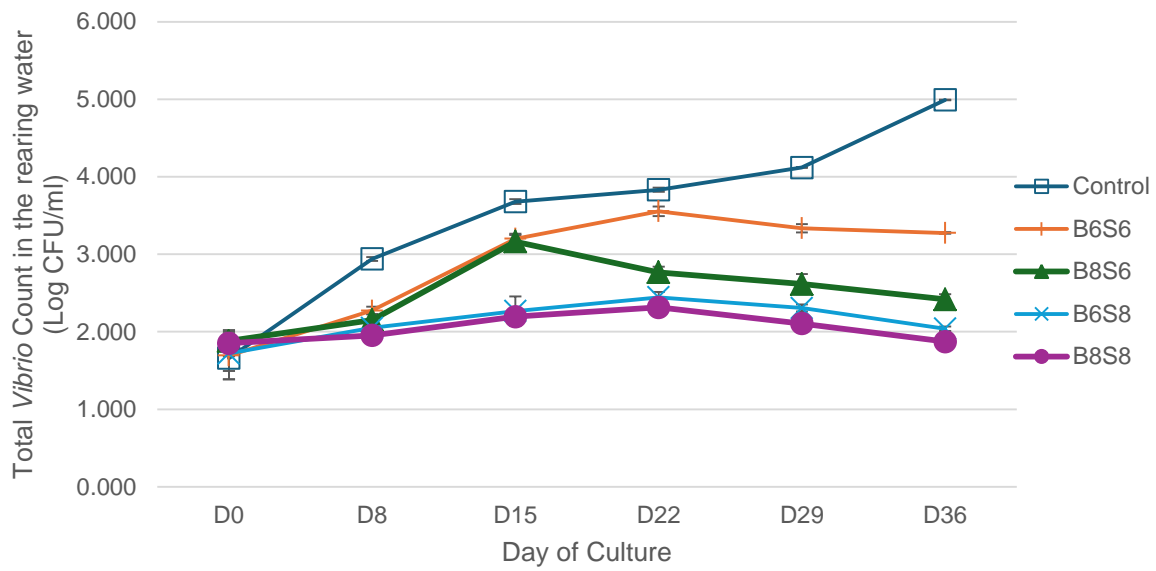


Figure S7: Total *Vibrio* count in shrimp rearing water after 36 days of feeding with combined *Bacillus* spp. and *Streptomyces* spp.

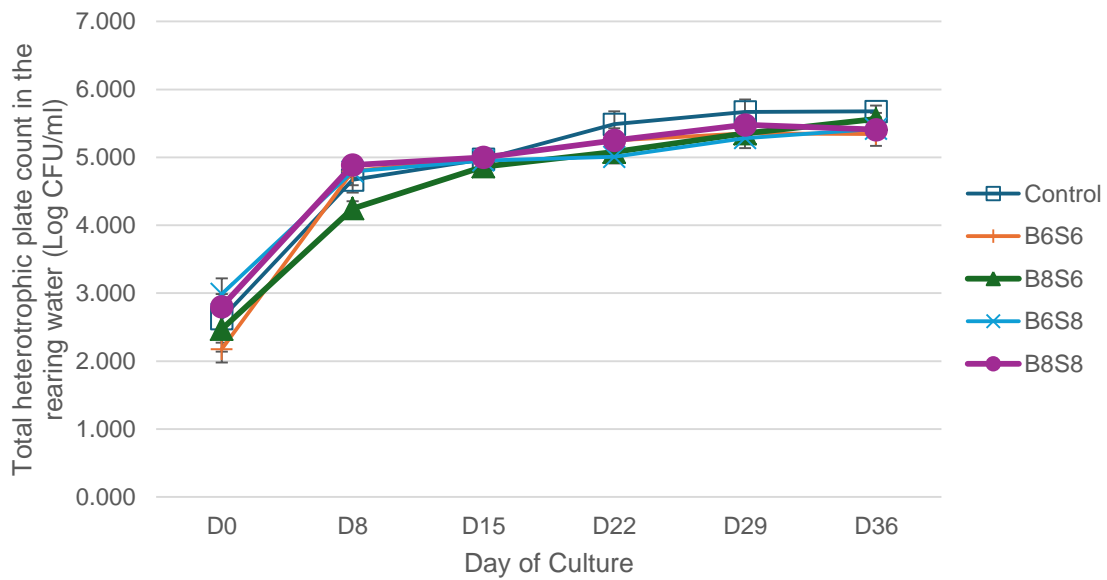


Figure S8: Total heterotrophic plate count in shrimp rearing water after 36 days of feeding with combined *Bacillus* spp. and *Streptomyces* spp.

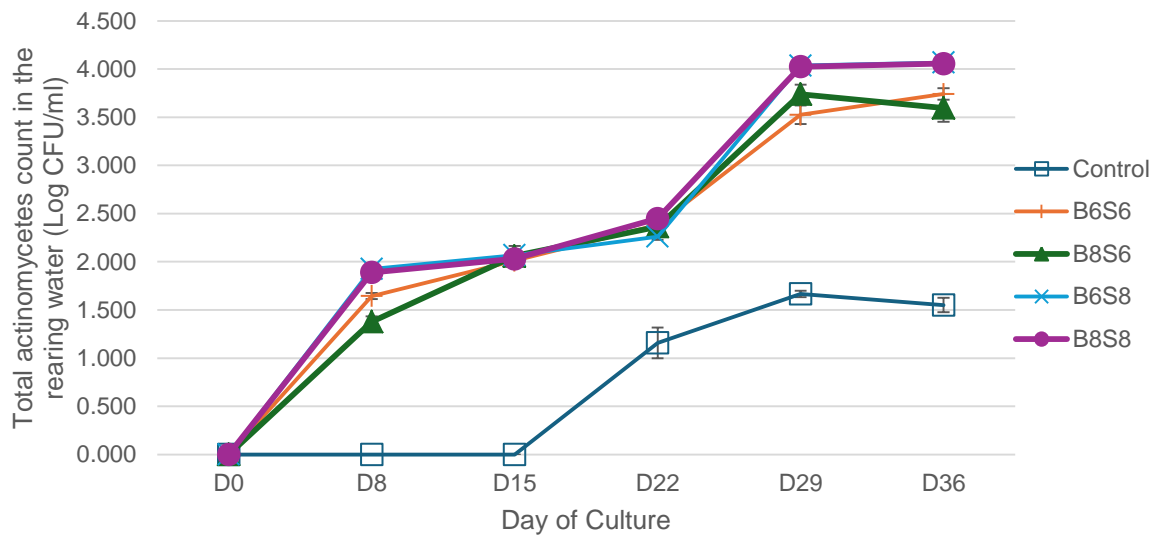


Figure S9: Total actinomycetes count in shrimp rearing water after 36 days of feeding with combined *Bacillus* spp. and *Streptomyces* spp.

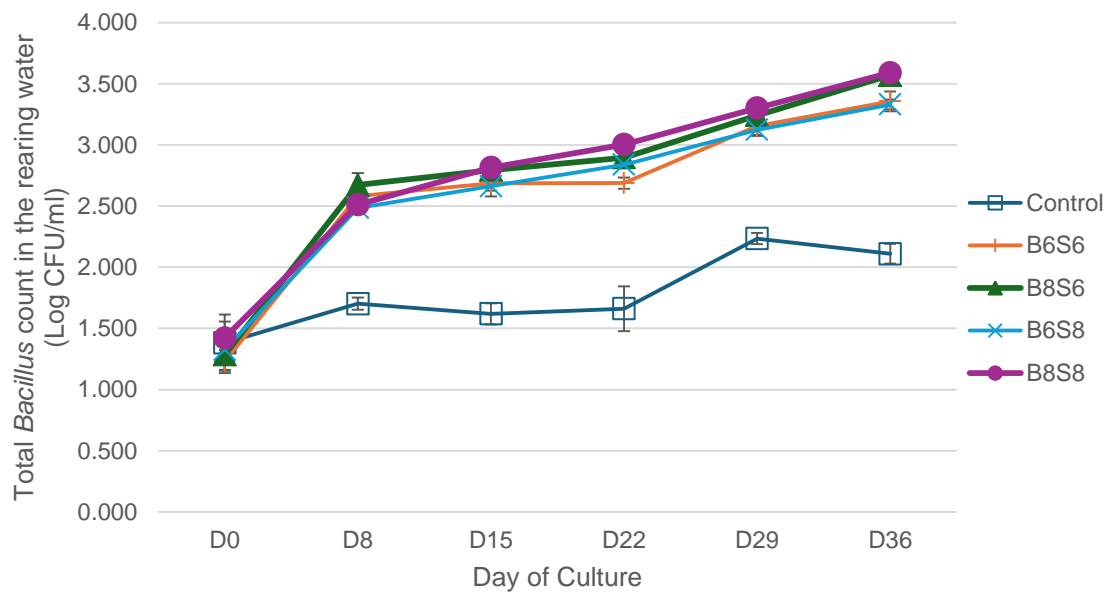


Figure S10: Total *Bacillus* count in shrimp rearing water after 36 days of feeding with combined *Bacillus* spp. and *Streptomyces* spp.

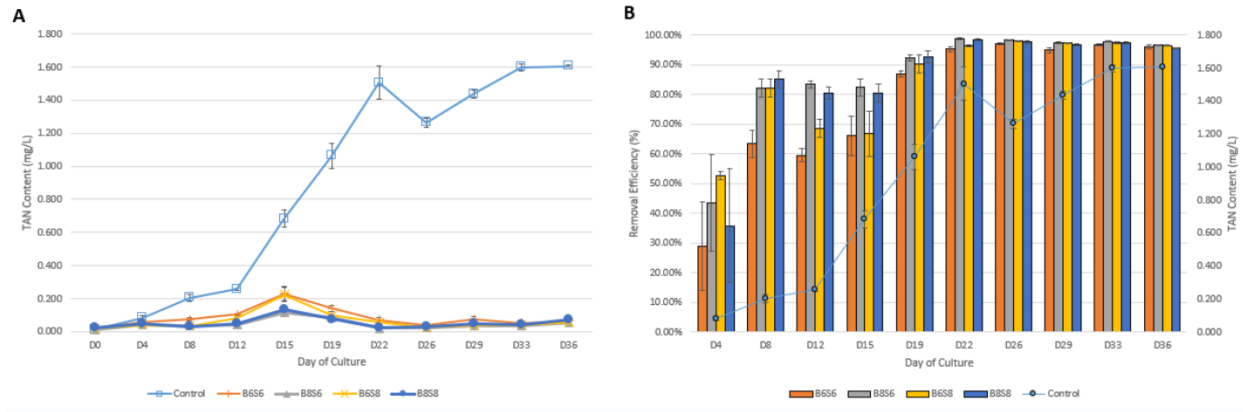


Figure S11: (A) Total ammonia nitrogen (TAN) content in the rearing water; (B) TAN removal efficiency over 36 days, using the Control TAN trend as the baseline for calculating removal efficiency in probiotic treatments (*Bacillus* spp. combined with *Streptomyces* spp.)

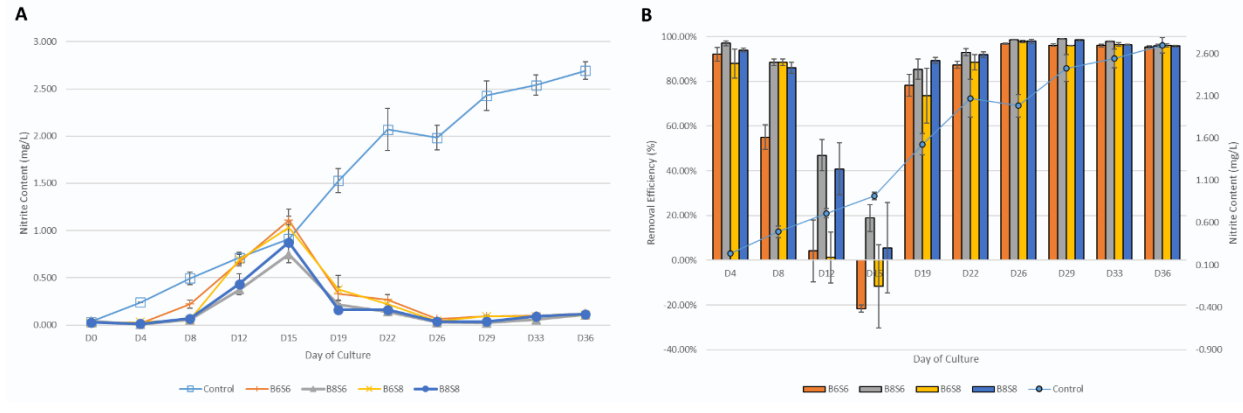


Figure S12: (A) Nitrite content in the rearing water; (B) Nitrite removal efficiency over 36 days, using the Control nitrite trend as the baseline for calculating removal efficiency in probiotic treatments (*Bacillus* spp. combined with *Streptomyces* spp.)