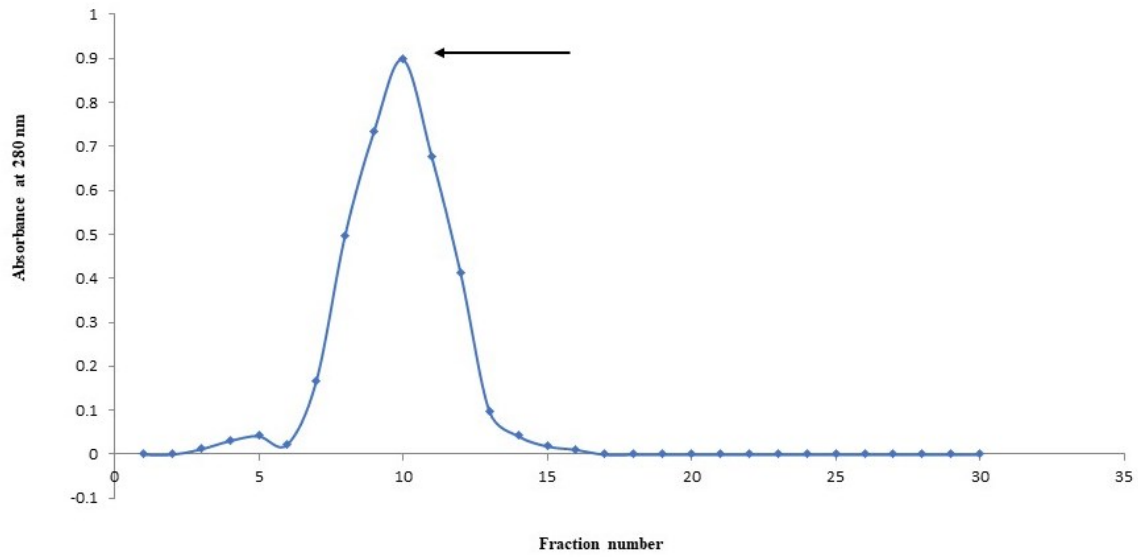
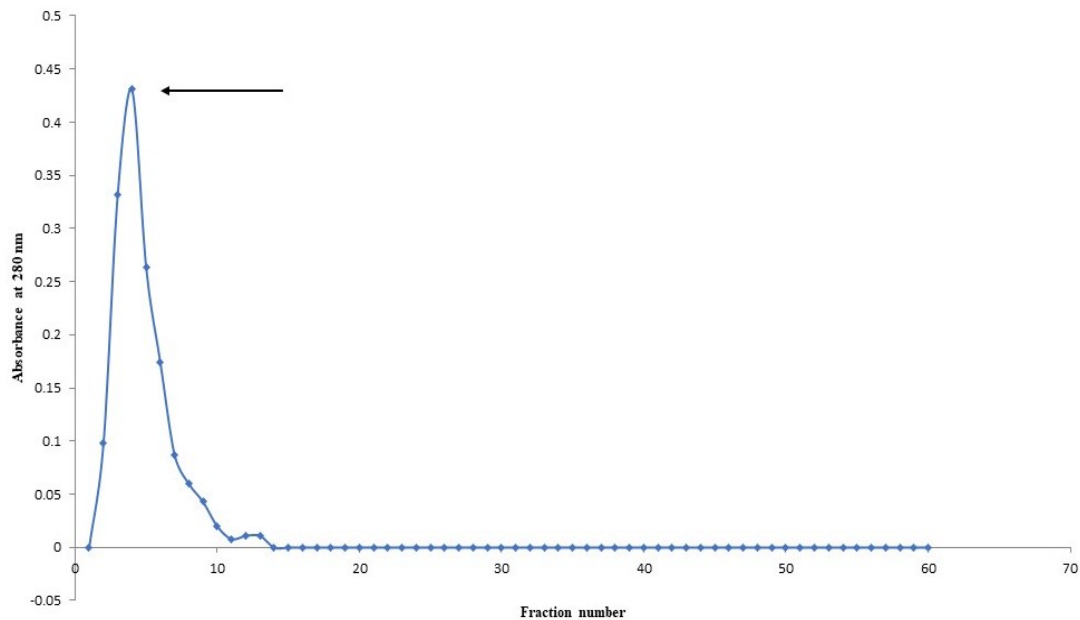


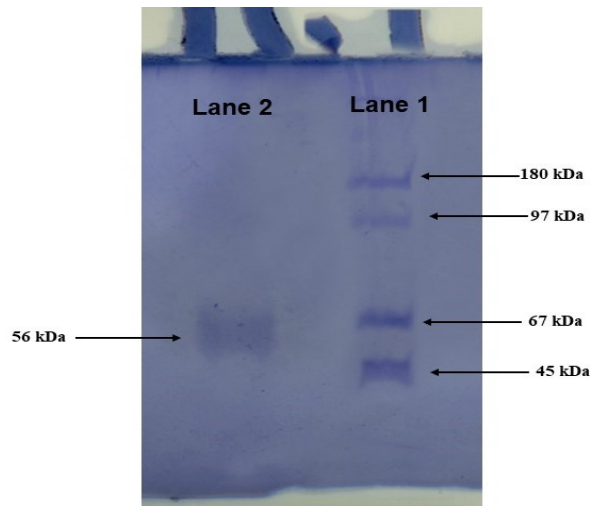
## Supplementary Information



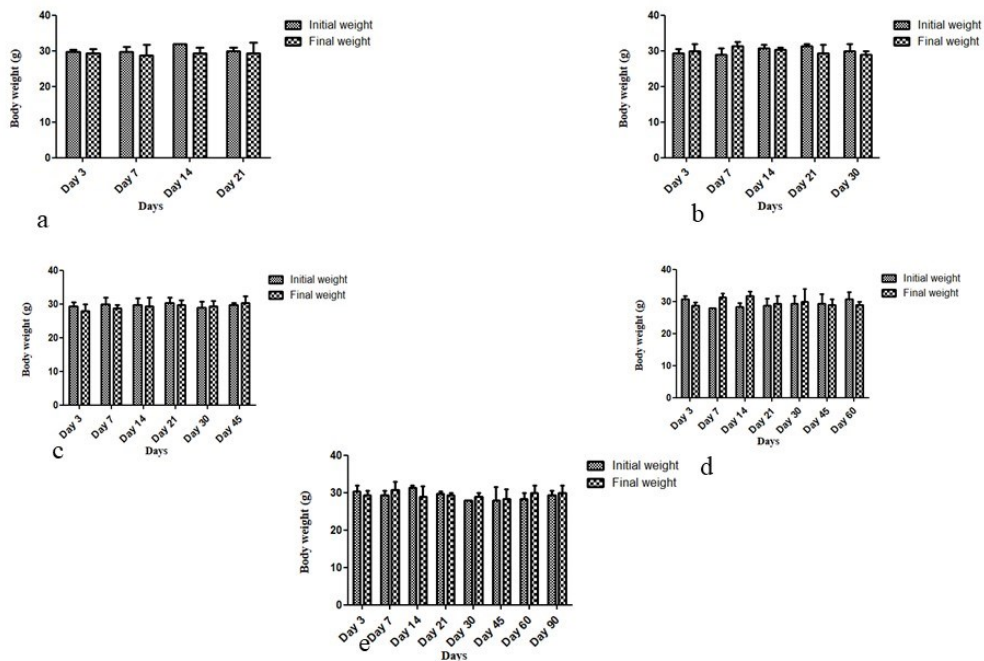
**Suppl. Fig. 1. Elution pattern of SIF from *E. coli* after gel filtration through Sephadex G-100 column showing the presence of sperm immobilization activity in fractions 8-12 with a peak value in fraction 10**



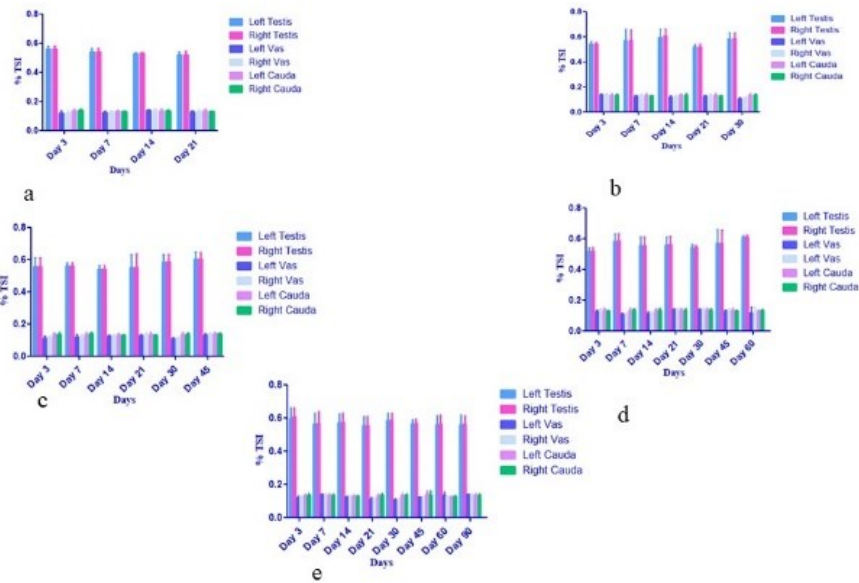
**Suppl. Fig. 2. Elution pattern of SIF from *E. coli* obtained after DEAE cellulose column showing sperm immobilization activity in fractions 3-6 with peak value in fraction 4**



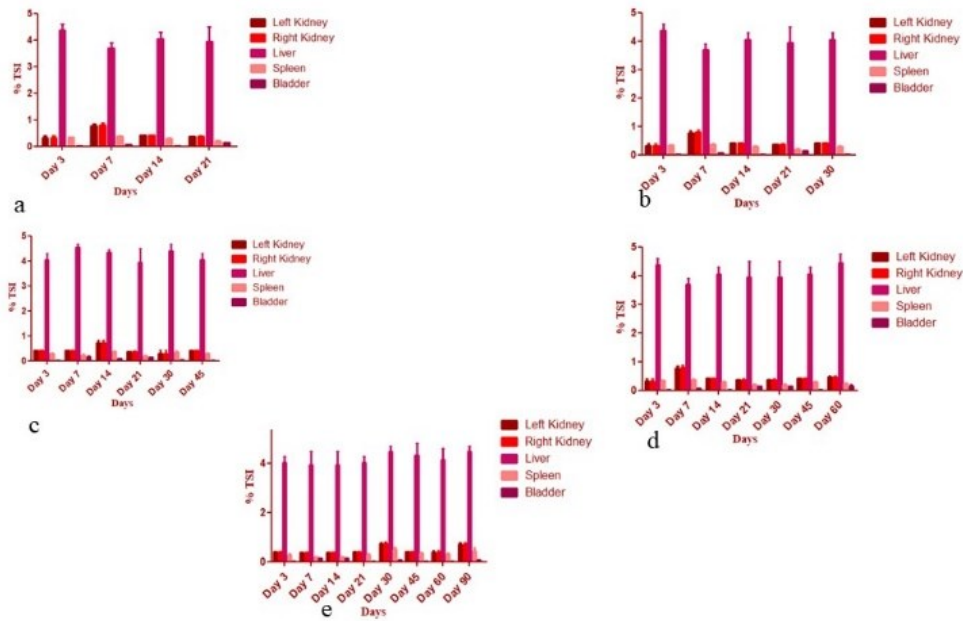
**Suppl. Fig. 3. Estimation of molecular weight of purified SIF by SDS-PAGE**  
 Lane 1- Protein molecular mass marker  
 Lane 2- Purified SIF



**Suppl. Fig. 4. Body weight response of male Balb/c mice inoculated via intra testis route with SIF a) 10µg b) 50µg c) 100µg d) 200µg e) 400µg**



Suppl. Fig. 5. Tissue somatic indices (%) of various reproductive organs of mice administered *via* intra testis route with SIF a) 10µg b) 50µg c) 100µg d) 200µg e) 400 µg



Suppl. Fig. 6. Tissue somatic indices (%) of various non reproductive organs of mice administered *via* intra testis route with SIF a) 10µg b) 50µg c) 100µg d) 200µg e) 400 µg